

279Online Boost

December 2022 279Online Newsletter

Hello, 279Online families and caregivers! Thank you so much for what you do every day to assist your scholar with engaging in school. We are off to a great start and look forward to celebrating successes at our upcoming parent-teacher conferences. Please read the newsletter thoroughly each month, as we will provide updates about our school community, helpful resources, important dates to remember, events and much, much more.



December Days Off

There is no school for students on the following dates this month

- Friday, December 2nd
- Thursday, December 22nd through Monday, January 2nd (Winter Break)

Trimester 2 Coming Soon!

Tri 2 begins on Monday, December 5th. Last day of Tri 1 classes for students is Thursday, December 1st. Please make sure your school work for Tri 1 is turned in by Thursday, December 1st.

Please also take a moment to review out Scholar & Caregiver Handbook prior to Tri 2 starting.



 [279Online Scholar/Car...](#)

docs.google.com

SCHOLAR/CAREGIVER HANDBOOK 2022-2023 TABLE OF CONTENTS
School Board District 279 Foundation School Board Policies Advertising
Bullying Prohibition Chemical Use/Abuse Prohibition Against Discrimination,
Harassment, and Violence Protection and Privacy of Education Records
Student Discipl...



Elementary Report Card FAQ & Descriptors

Please take a moment to review our Elementary Report Card FAQ with the Grade Level Descriptors embedded in the FAQ

[English Report Card FAQ](#)
[Hmong Report Card FAQ](#)
[Spanish Report Card FAQ](#)

Tips for How Parents/Guardians can stay informed

- Follow us on social media:
 - Facebook at **279Online**
 - Twitter at **279Online**
 - Instagram at **279Online_K12**
 - [279Online website](#).
- Keep your contact information current in [ParentVUE](#). You can update phone numbers and email addresses at any time. If you need to update your address, please go to the [Enrollment Center](#) website for instructions.
- At the elementary level, please check [Seesaw](#) for daily assignments and schedules, information from your teacher, and more.
- At the secondary levels, please check [Schoology](#) for current grades, daily assignments, and overall progress. Mid-trimester grades and Trimester grades are posted in ParentVUE.
- Review our current and past [newsletters](#) on our website for important information.



Check your email regularly for **Blackboard** and **Schoology** emails from us. If you aren't seeing them, please look in your junk folder or check your setting to make sure you don't have emails blocked.

279Online College and Career Resource Center

Please take a moment to review the College & Career Resource Center Newsletter put together by Mr. Otis. See below or [follow this link](#)

279 ONLINE
 OUSD AREA SCHOOLS

Audio Overview Links (add audio link)

INSIDE THIS ISSUE

- FAFSA Completion Event
- Moe23 Scholarship
- PSD & EMC
- Page Grant
- Letters of Recommendation
- Early Decision vs. Early Action

SAVE THE DATE
 FAFSA Completion Event
 → Help seniors! Need some help getting your FAFSA submitted? The CDC is here to help! We will be hosting another online FAFSA Completion Event on Thursday, January 19 from 5:00-7:00 pm.

Moe23 Scholarship
 The Moe23 Scholarship Fund, in honor of Mustafa Moe Samir, aims to help passionate students make the world a better place through the pursuit of education.
 Mustafa grew up in Brooklyn Center, Minnesota and attended Fair Oaks Elementary, North View Junior High, and Park Center Senior High School. He went on to earn his Bachelor's from Minnesota State University, Mankato in 1994.
 The Moe23 Scholarship Fund honors Mustafa, who passed away tragically and unexpectedly due to complications from the flu on January 23, 2018, at only 41 years old. His passion for education and learning lives on in the scholarship requests.
 Ten \$5,000 scholarships will be awarded to students in OUSD Area Schools, Brooklyn Center or Champlin.
 See the [scholarship details](#) for more details. The application is due Friday, December 23, 2022.

CAREER GUEST SPEAKER
 Wednesday, December 7th at 2:30 PM
 Malina Hastings will share information about her career in cosmetology and offer advice for

LETTERS OF RECOMMENDATION
 Some college applications and scholarships require a letter of recommendation. Typically, schools prefer a letter from a core teacher. However, if you plan to study an elective subject or a scholarship is awarded based on your experience in that field, it would be appropriate to get a letter of recommendation from that teacher. Students should give teachers at least ten weeks to write the letter. It is also important to give the teacher a resume or the [CDC Recommendation Questionnaire](#) to help the teacher write a letter that is tailored to you and the school/scholarship.

PSD & Early Middle College
 High Secondary Enrollment Options (HSEO) and Early Middle College (EMC) provide an alternative for qualified students to attend college for one or more years in high school. The requirements for each program are as follows:
 HSEO: Students must have a minimum GPA of 3.0 to qualify for the program. [Click here for more details about HSEO.](#)
 EMC: Students must have a minimum GPA of 3.0 to qualify for the program. [Click here for more details about EMC.](#)
January 2023 at 6:00 PM. For more information, visit the [counselor's website](#).

Page Grant
 The Page Grant is a scholarship program awarded to students of color who graduate from a high school in OUSD and attend a Minnesota post-secondary institution. Students at all levels of postsecondary achievement seeking to pursue a 2 or 4 degree at a Minnesota college or university and agree to complete annual service projects with children can qualify for a grant. Subsequent grants are based on student's academic progress and mentoring performance. See the [CDC](#) for more information.

Early Decision vs. Early Action
 Early decision (ED) and early action (EA) college application plans can be beneficial to students—but only to those who have thought through their college options carefully and have a clear preference for one institution.
 Early decision (ED) plans are binding. A student who is accepted as an ED applicant must attend the college. Early action (EA) plans are generally non-binding. EA students receive an early response to their application but do not have to commit to the college until the normal reply date of May 1.
 Approximately 450 colleges have early decision or early action plans, and some have both. Some colleges offer a non-binding option called single-choice early action, under which applicants may not apply ED or EA to any other college. See the [College Board](#) for more details.

ATTENTION LIONS AND OTTERS!
SENIORS
 • Incoming "senior" is not senior! Start now on an early opportunity to pay for college. Check out the [scholarship details](#) and apply!
JUNIORS
 • Are you ready to take the ACT in April? Start now on an early opportunity to pay for college. Check out the [scholarship details](#) and apply!
SOPHOMORES
 • Start now in the time to explore different career options. If you are working with your hands and are ready to start making money, the trade might be a good option. If you are not sure, the trade might be a good option for next session to learn more.
FRESHMAN
 • Get involved! Students that are engaged in clubs, activities, and sports are more likely to be successful in college. Check out the [scholarship details](#) and apply!

Weather-Related E-Learning Days

The weather outside isn't quite frightful yet, but in the event that snow or cold affect in-person schools and they shift to an e-learning day, 279Online would continue as normal. Classes will still be offered as scheduled, and scholars will be expected to attend as normal.

Hello Otters! Want to go watch sporting events at our district high schools? See below for information.



MGSH games

- All students must show their ID (ID card or StudentVue)
- No water bottles or backpacks allowed
- No re-entry if you leave
- All elementary and middle school students must be accompanied and supervised by an adult.

*Note: Certain games may be restricted to students from the participating schools only. (ie. MGSH vs OSH)



PCSH games

- Students Grades 9-12 must show their ID (ID card or StudentVue)
- Backpacks are allowed but will be searched
- No re-entry if you leave
- All elementary & middle school students must be always accompanied and supervised by an adult



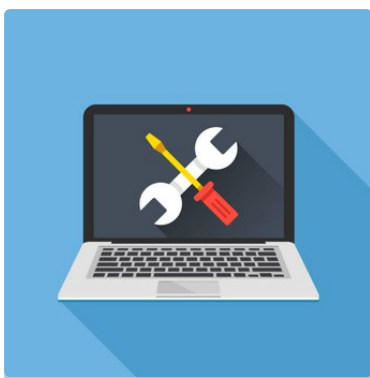
OSH games

- 279Online students will need a guest pass connected with an OSH student to attend OSH home football and select basketball games.
- All other sports events you can attend without a guest pass

Elementary Specialist Schedule

Elementary scholars are on a rotating schedule with the three specialists; Art with Ms. Colosimo, Music with Ms. Buelow, and PE with Mr. Sycks. Classroom teachers are including the rotations in their clickable schedule (see example below). Our specialists will communicate what they're focusing on with the grade-level. If you have questions about your schedule, please contact your student's teacher.

TIME	Monday	Tuesday	Wednesday	Thursday	Friday
8:30	Morning Meeting	Morning Meeting	Morning Meeting	Morning Meeting	Morning Meeting
9:00	Math	Math	Math	Math	Math
9:55	Reading	Reading	Writing	Reading	Reading
10:50	PE/Art/Music	PE/Art/Music	Work Time	PE/Art/Music	PE/Art/Music
11:45-12:15	Lunch				
12:20	Number Corner	Number Corner	Acceleration Block	Number Corner	Number Corner
1:15	Social Studies or Science	Social Studies or Science	Exploratory Block	Social Studies or Science	Social Studies or Science
2:10	Reading Groups	Reading Groups	Work Time	Reading Groups	Reading Groups
3:00	Closing	Closing	Closing	Closing	Closing



Technology Assistance

Need help logging in to an account, checking in for an online meeting with a teacher, or setting up a device? Check out the technology resources in the [Parent and Family Toolkit](#).

Need more technology assistance? The district tech support help desk is open Monday through Friday from 7 a.m. to 4 p.m. on student days, and 7 a.m. to 3:30 p.m. on non-student days. Email help@district279.org or call 763-391-7180.

Attendance/Absence Reporting

Reminders about Attendance Practices for 279Online:

GRADES K-5

Teachers take attendance twice a day through their classroom meetings.

GRADES 6-12

- Scholars are expected to self report attendance through a Schoology attendance quiz for each class by **6:00 pm** in Schoology daily
 - [Click here for scholar directions](#)
- Teachers verify and submit the official attendance record in Synergy the next day.
- At 6:00 pm, School Messenger calls will go out to families for scholars with unexcused absences from the **previous day**
- If a scholar is unable to attend, families need to report the absence to 279Online in order to excuse the absence (phone: 763-391-8670 option 1 or email: online@district279.org) OR report your student(s) FULL DAY absences in ParentVue. [Click Here](#) for directions.

- While attendance is taken through this quiz, scholars are **still expected to attend synchronous meetings** with their teachers and engage in their learning. We want them to be there and miss them when they don't come!

Teachers will review this attendance process with scholars in advisory and their classes. If you have any questions regarding attendance please contact your scholars' teachers or the main office (phone: 763-391-8670).

Device and Materials Distribution Reminder

District Issued Device

If your student has not received their district issued device, please email the HelpDesk (Help@district279.org) to set up an appointment to pick up your scholar's device at the Educational Service Center (ESC).

Curricular Materials

279Online's materials distribution hub is now open and located at Oak View Elementary. If you were unable to pick up materials at the Open House, please call the office (763.391.8684) to schedule a time for pick up.

Oakview Elementary: 763.391-8684 - Please call ahead so materials will be ready for you upon arrival.

Office hours: 8am-4pm

6710 E Fish Lake Rd

Maple Grove, MN 55369

Throughout the year, if your scholar requires any physical materials, their teacher will communicate that to you. Materials will be available at the distribution hub once you receive this communication.

Please take a few minutes to tell us how we are doing!

279Online Fall 2022 Family Feedback

We are seeking family and community feedback regarding our school and also our positive behavioral expectations. This is part of District 279's Positive Behavioral Interventions and Supports system, otherwise known as PBIS. In 279Online, this work will be led by a committee of staff, scholars and parents/caregivers. Below is an image of our school-wide behavior expectations. Please take a few minutes to answer the questions below. Your feedback is important to us. We will use your feedback to plan for this school year. We are also looking for members to join our committee. Please indicate your interest in this form. Thank you for your contributions!

[Sign in to Google](#) to save your progress. [Learn more](#)

* Required

Join our District Planning Advisory Council!

DPAC is looking for parents / guardians to serve a one-year term. Membership is based on interest, not educational expertise. Members include up to two representatives from each elementary building and up to three representatives from each secondary building, up to six non-parents from the community, one School Board member, ISD 279 teachers and administrators, and senior high students. Additional information about DPAC is available on the website at <https://www.district279.org/life-279/advisory-groups/dpac>

[District Planning Advisory Council Volunteer Form](#)

Click here to complete your
free and reduced lunch
application.



The Free/Reduced lunch program can also provide scholars and families with benefits like lower fees for lost items, exams, etc., this program also provides the school and the district with much-needed funding. [Please complete this application today.](#)

District and Community Resources

Rather than posting numerous resources each week, we are compiling them in a Google Doc that will be updated accordingly. Please [click here](#) for assistance regarding things like mental health, food and clothing support, and Internet access.

Schoology Guide for Families

For families who use Schoology, we created this handy reference guide to help you navigate what you'll see in Schoology, how Schoology is different than ParentVue, and how to get support for accessing the parent side of Schoology. [Click here](#) for the reference guide.



Schoology Guide



Commonly Used Gradebook Symbols

—	Not turned in
0 Missing	Missing
Incomplete	Incomplete
—	Online test/quiz that has been turned in, but not graded
—	Assignment has been submitted but not graded

Converting to Traditional Letter Grades

A	= 3.51 - 4.0
A-	= 3.00 - 3.50
B+	= 2.84 - 2.99
B	= 2.67 - 2.83
B-	= 2.50 - 2.66
C+	= 2.34 - 2.49
C	= 2.17 - 2.33
C-	= 2.00 - 2.16
D+	= 1.84 - 1.99
D	= 1.67 - 1.83
D-	= 1.50 - 1.66
F	= 0.00 - 1.49

Setting Up Parent Schoology Notifications

You may elect to receive two email digests of your scholar's activity in Schoology. To manage email digest settings in your parent account:

1. Click the arrow on the top right of Schoology.
2. Select a child from the list that appears in the drop-down menu.
3. Once you're viewing the scholar's account, click the downfacing arrow again.
4. Select **Settings**.
5. From the **Notifications** tab, you can elect to receive one or both of two email summaries:
 - o To receive the **Parent Email Digest**, select **On** in your **Email Summary** menu. You can receive emails on a **Daily** or **Weekly** basis. If you choose **Daily**, you may set a time at which the notification will be sent to your inbox. If you choose **Weekly**, you'll have an additional option to select the day of the week you'd like to receive the email.

ParentVue is used for:	Schoology is used for:
-View Attendance	-View Assignments
-View Schedule	-View Course Materials
-View Health Records	-Scores on Assignments & Tests
-View Standardized Test History	-Current Grades
-View Report Cards	
-Sign up for conferences	

If you have questions or would like additional support navigating and understanding Schoology, please call 279Online at 763-391-8670.

For additional information, including video instructions, scan this QR code

